

# one<sup>1</sup>

series

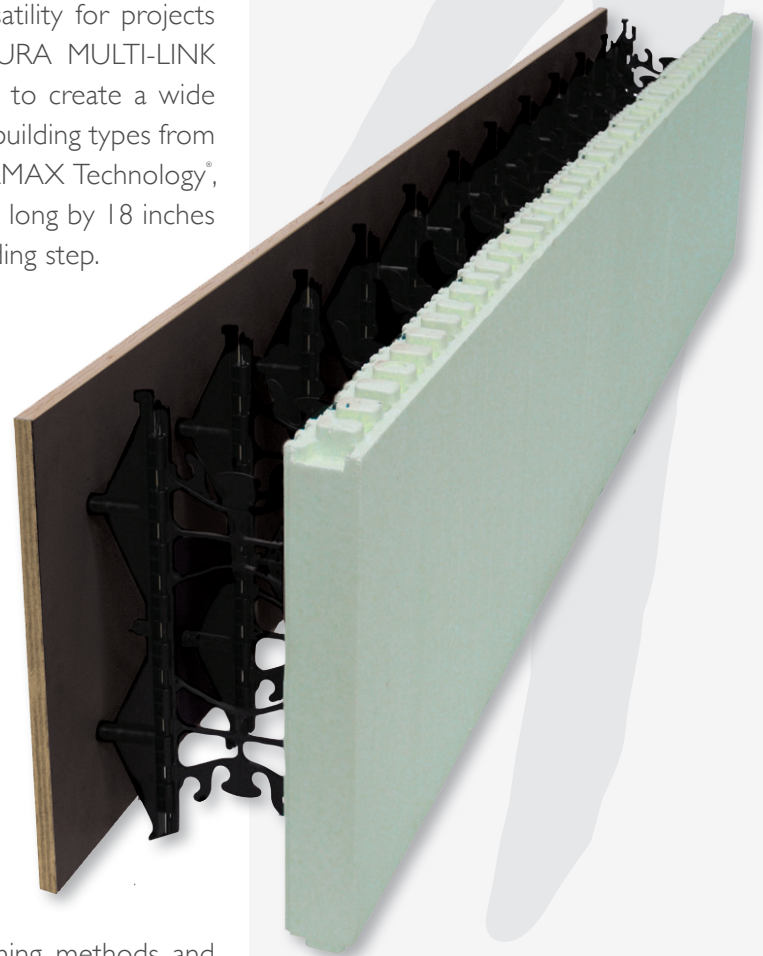


NUDURA has revolutionized the ICF industry from its inception, believing that making quality products that feature innovation to make the building process easier and faster is crucial to our customers. We believe that driving innovation and changing the status quo allows us to provide the most innovative line of Insulated Concrete Forms on the market.

That innovation continues with a new breed of Insulated Concrete Forms. The One Series by NUDURA, featuring DURA MULTI-LINK Technology<sup>®</sup>, is the industry's only multi-link form offering builders and architects unmatched versatility for projects designed using ICFs. At the core of this innovative line is DURA MULTI-LINK Technology<sup>®</sup>, a newly designed web that offers users the ability to create a wide variety of custom multi-sided form combinations for a variety of building types from commercial to residential. The One Series also features DURAMAX Technology<sup>®</sup>, the industry's largest standard form on the market, 8 feet (2.4m) long by 18 inches (457mm) high placing 12 sq. ft. (1.11m<sup>2</sup>) of wall area in one building step.

The One Series will offer users the ability to reduce labor by eliminating the need to strip foam for elevator shafts, stairwells and other areas that require a non-combustible finish. The One Series gives architects the ability to have more versatility with design for multi-storey, educational and commercial warehouses. For home builders, the One Series is ideal for pools and anywhere only one side of foam is needed. Transition between concrete and foam is seamless, the unique design allows concrete to meet with the outside edge of a NUDURA foam panel. The DURA MULTI-LINK Technology<sup>®</sup> web, uses smaller attachment points that have been created to alleviate webs being visible in the concrete side of the wall. This innovative design features only two small connection points per web that are easily covered over and hidden. The end result is a smooth interior or exterior surface.

How does it work? The One Series combines traditional forming methods and Insulated Concrete Form technology together. NUDURA supplies all of the materials necessary to complete the multi-link form, from the webs, Formply screws and specially designed jig to make assembly easy and fast. The Formply pieces are pre drilled which eliminates the need for onsite drilling, installers simply assemble to the desired form combination quickly and easily. Combine this with NUDURA's innovative existing ICF panel system, custom form combinations and transitions between 90° and 45° are easily done. Once the job is completed, all of the Formply panels can be stripped, cleaned and reused for the next job, eliminating waste and further cost.

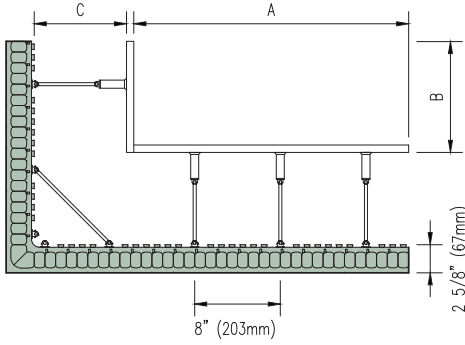


# one



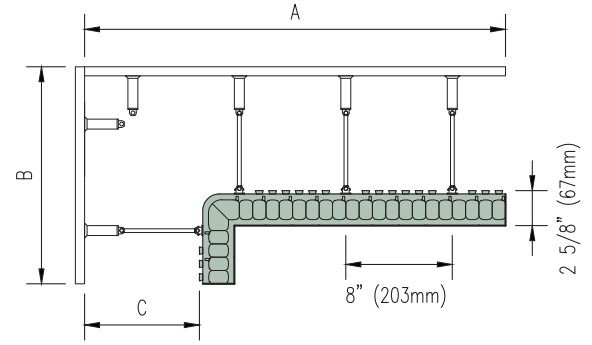
NUDURA One Series awarded for the 2016 Concrete/Masonry Product Innovation Award by Architectural Products!

One Side Inside 90° Corner



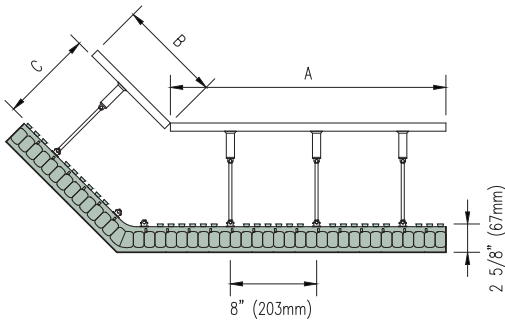
DIMENSIONS			
INSERT WEB DIMENSIONS	A	B	C
4" (102mm)	2'-3 5/8" (701mm)	1'-0 3/8" (314mm)	6 5/8" (168mm)
6" (152mm)	2'-1 5/8" (650mm)	10 3/8" (263mm)	8 5/8" (219mm)
8" (203mm)	1'-11 5/8" (600mm)	8 3/8" (212mm)	10 5/8" (270mm)
10" (254mm)	1'-9 5/8" (549mm)	6 3/8" (161mm)	12 5/8" (321mm)
12" (305mm)	-	-	-

One Side Outside 90° Corner



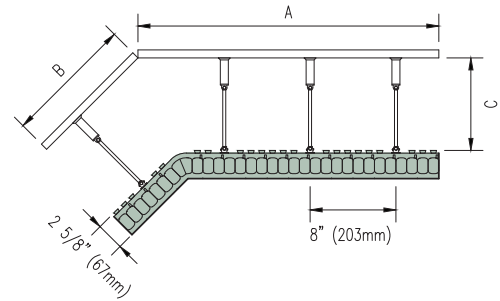
DIMENSIONS			
INSERT WEB DIMENSIONS	A	B	C
4" (102mm)	2'-5 5/8" (752mm)	1'-2 3/8" (366mm)	6 5/8" (168mm)
6" (152mm)	2'-7 5/8" (803mm)	1'-4 3/8" (416mm)	8 5/8" (219mm)
8" (203mm)	2'-9 5/8" (854mm)	1'-6 3/8" (467mm)	10 5/8" (270mm)
10" (254mm)	2'-11 5/8" (905mm)	1'-8 3/8" (518mm)	12 5/8" (321mm)
12" (305mm)	3'-1 5/8" (956mm)	1'-10 3/8" (569mm)	14 5/8" (371mm)

One Side Inside 45° Corner



DIMENSIONS			
INSERT WEB DIMENSIONS	A	B	C
4" (102mm)	2'-2 3/8" (670mm)	10 3/8" (264mm)	6 5/8" (168mm)
6" (152mm)	2'-1 1/2" (649mm)	9 1/2" (243mm)	8 5/8" (219mm)
8" (203mm)	2'-0 3/4" (628mm)	8 3/8" (222mm)	10 5/8" (270mm)
10" (254mm)	1'-11 7/8" (607mm)	7 7/8" (201mm)	12 5/8" (321mm)
12" (305mm)	1'-11 1/8" (586mm)	7 1/8" (180mm)	14 5/8" (371mm)

One Side Outside 45° Corner



DIMENSIONS			
INSERT WEB DIMENSIONS	A	B	C
4" (102mm)	2'-3 1/4" (691mm)	11 1/4" (285mm)	6 5/8" (168mm)
6" (152mm)	2'-4" (712mm)	12" (300mm)	8 5/8" (219mm)
8" (203mm)	2'-4 7/8" (733mm)	1'-0 7/8" (327mm)	10 5/8" (270mm)
10" (254mm)	2'-5 3/4" (754mm)	1'-1 3/4" (348mm)	12 5/8" (321mm)
12" (305mm)	2'-6 1/2" (775mm)	1'-3 1/2" (369mm)	14 5/8" (371mm)

96" (2438mm)

