

NUDURA FORM UNIT

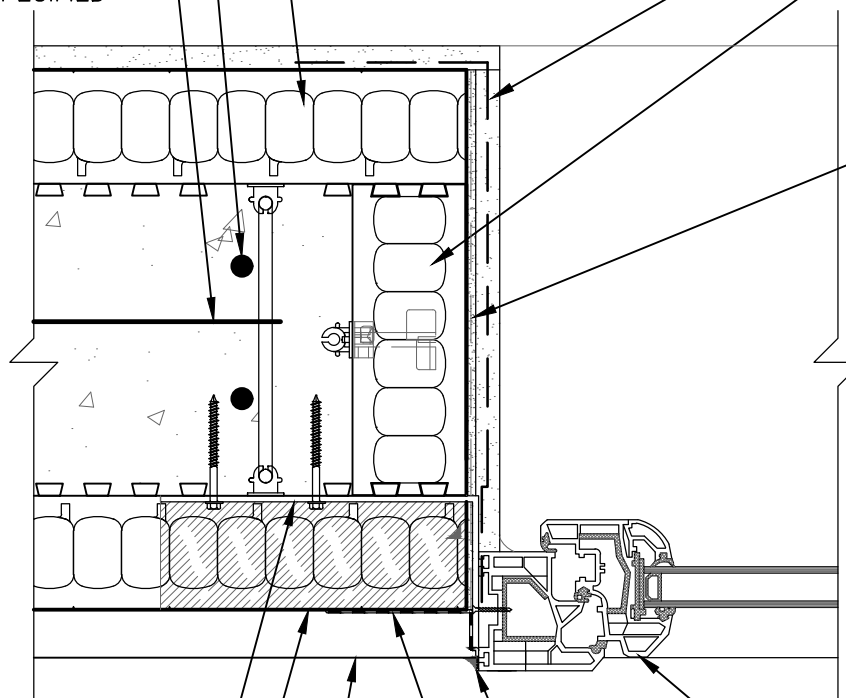
OPENING REINFORCEMENT AS SPECIFIED BY LOCAL PRESCRIPTIVE OR ENGINEERING DESIGN

HORIZ/VERT REINFORCEMENT AS PER CODE OR AS SPECIFIED

PLASTER BOARD

NUDURA END CAP

RENDER BASE COAT AND MESH AS SPECIFIED



METAL BRACKET INSTALLED POST CONCRETE PLACEMENT TO PROVIDE WINDOW SUPPORT

EPS FOAM REMOVED AT WINDOW MOUNTING BRACKET- REPLACE FOAM AFTER BRACKET INSTALLATION

TIMBER CLADDING WITH BATTENS AS PER SPECIFICATION

WINDOW FRAME

CONTINUOUS CAULKING AROUND WINDOW FRAME TO MASONRY c/w DRAIN SLOT AT CENTER OF SILL

JAMB FLASHING SEALED TO EPS FOAM AND WINDOW FRAME AS PER CODE OR AS SPECIFIED

**DISCLAIMER NOTICE:**  
SPECIFIC INFORMATION  
REQUIRED FOR COMPLIANCE  
WITH LOCAL CODES IS THE  
RESPONSIBILITY OF THE  
DESIGNER



**NUDURA**

**INTEGRATED BUILDING TECHNOLOGY**

*Building Value.*

STANDARD FORM UNIT  
WINDOW DETAILS  
WINDOW JAMB  
TIMBER CLADDING

REV. NO.  
000

DATE:  
DEC 2015

DRAWN BY:  
K. STILL

DWG NO.

EU-51

SCALE:  
1 : 4